



THE BERLIN POLICE – Meeting the Challenges of a Cosmopolitan City

THE BERLIN POLICE – Meeting the Challenges of a Cosmopolitan City

**Welcome to Berlin
and welcome to the Berlin Police!**

Unique, diverse – Berlin is colourful, exciting and vibrant.

And so are we, the Berlin Police, the German capital's police force.

Please join us as we patrol the city and let us show you just how varied police work is.

In this brochure, you will discover many fascinating facts about Berlin and the challenges we face. We shall also show you how the Berlin Police meets these challenges.

Please visit our internet site and read more about us, including daily reports, information on the latest crime developments and advice on crime prevention.

Enjoy the trip!

Berlin Police
www.polizei.berlin.de





Using public transport ...	20
... we accompany you	21
<i>Police in the public transport network</i>	
Embassies and special facilities ...	22
... are guarded by us	23
<i>Central Facility Management</i>	
On the darker side of town ...	24
... we shine a light	25
<i>CID</i>	
Scientific search ...	26
... for criminals	27
<i>Forensic Laboratory LKA KT</i>	
The hostage desperately pleading with the captor ...	28
... rescued through professional expertise	29
<i>Special Units</i>	
Berlin on the water ...	30
... police on boats	31
<i>River Police / Police Divers</i>	

The Berlin air ...	32
... through which we fly	33
<i>Helicopter Squad / The Unmanned Aircraft System</i>	
Four-legged friends ...	34
... our friends and helpers	35
<i>Police Dog Unit</i>	
Berlin for adults and children ...	36
... Crime Prevention for all ages	37
<i>Crime Prevention</i>	
We support ...	38
... Berlin's cyclists	39
<i>Road Traffic Crime Prevention</i>	
Berlin, a city of diversity ...	40
... acceptance and inclusion	41
<i>Designated contact for intercultural affairs / LGBT</i>	

Interesting and varied ...	42
... career opportunities	43
<i>Training</i>	
Tracing the history ...	44
... of the Berlin Police	45
<i>Police Museum</i>	
Europe in Berlin ...	46
... the Berlin Police in Europe	47
<i>Foreign Assignments</i>	
Badges, Patches and ID Cards	48
Police Stations in the Boroughs	50
Index of Footnotes	51
Index of Photos	52
Imprint	54





At your service ...

Welcome to Berlin!

The city with its many different facets, is the capital and seat of government of Germany. A city which vibrates – politically, economically, culturally and socially.

Berlin, situated on the river Spree, has approx. 3.3 million inhabitants in an area of 892 km². In Berlin, the greenest of the German cities – almost 44% of the area is urban green-space¹ – population density measures 3,700 per square metre, equally shared between the sexes. Visitors and residents from all over the globe shape life in the heart of Germany, where each and every one finds his/her own Berlin. The city, which is at least 775 years old, can look back on an impressive and eventful history. Take up this invitation to learn more about the city and the Berliners. It's worth the trip – after all, Berlin belongs to the top 3 destinations in Europe².



To find out more about Berlin

... go to www.berlin.de





To find out more about us

... visit us on
www.polizei.berlin.de



... in Berlin

Welcome to the Berlin Police!

We face the challenges of this vibrant capital city every day. We are more than 22,500 men and women who give their best every day for the safety and security of the city – not just in operations seen by the public, but also behind-the-scenes.

Our Workforce:

- around 16,500 police officers in uniform and plain-clothes
- approx. 2,000 security guards, prison-officers and staff in other law-enforcement related areas
- around 2,800 administrative staff, including management and clerical staff, technical staff and scientists of various disciplines
- more than 1,500 apprentices and trainees



In Berlin

- ... more than 90 babies are born every day³
- ... there are around 11,000 restaurants, snack-bars, cafés and ice-cream parlours, around 2,100 bars, pubs and clubs, approx. 150 theatres, 3 opera-houses, 10 world-famous orchestras
- ... around 25 million overnight-stays are registered every year⁴
- ... more than 7,500 taxis are at your service by day and night
- ... public transport – Underground, Over-ground-City-Railway, Bus and Metrobus – is available around the clock
- ... night is turned to day during the “Long Nights of Museums and Science”



The city that never sleeps ...

Berlin is a city that never sleeps. Cultural diversity, the vibrancy of the city and the almost inexhaustible range of things to do, keep Berliners and their visitors on the move.

Berlin never stands still – there is always something going on.

A visit to the capital mixes history with the contemporary. There is a wide range of art, culture, music, entertainment and shopping opportunities. The availability of public transport makes getting around easy – by day and by night.

Restaurants, cafes and hotels in Berlin cater for every budget and taste. The flourishing creative scene and the latest music and clubs provide more highlights.

You can see why the number of guests visiting Berlin has been increasing for years.



Operations Centre spring into action. Around 3,700 emergency calls are made daily (about 1.34 million annually). 50% of the calls require immediate response and are directed to the next-available police patrol car.

Citizens' Service

The Berlin Police offer an information and advice service for the general public. The telephone number **(+49 30) 4664-4664** is operated 24 hours a day and 365 days a year.

Online reports to the police can be made at www.polizei.berlin.de using the **Internetwache (Internet Watch)**. Matters not requiring an immediate police response can be reported here. You can also offer information, register demonstrations, express thanks or make a complaint.

... the Police, always on duty

The Operations Centre

The Operations Centre of the Berlin Police is staffed 24 hours a day and 365 days a year.

Emergency calls, police patrols requiring back-up, and calls from the police citizens' service – someone needs to know where to find their local police station.

As soon as an **emergency call** (emergency service number **110**) comes in, the staff of the

The Operations Centre of the Berlin Police

- ... receives an emergency call (110) every 24 seconds
- ... has an average response time for emergency calls of 5 seconds
- ... is contacted around 140 times per day by the Police Citizens' Service
- ... deals with approximately 200 reports daily from the Internet Watch



Berlin has

... 12 boroughs: Pankow, Reinickendorf, Mitte, Charlottenburg-Wilmersdorf, Spandau, Treptow-Köpenick, Friedrichshain-Kreuzberg, Tempelhof-Schöneberg, Steglitz-Zehlendorf, Neukölln, Lichtenberg, Marzahn-Hellersdorf
... 96 districts

Wherever you live ...

The Berlin Boroughs

In Charlottenburg, take a stroll over the Kurfürstendamm. Enjoy botanical delights in Marzahn's "Gärten der Welt" (Gardens of the World) or visit the "dicke Marie" (lit. "Big Mary") in Reinickendorf, the oldest tree in Berlin, which was planted in the year 1192. For art,

culture and night-life, Pankow's "Kulturbrauerei" – a listed building with 25,000 square metres of floor-space – is "the place to be".

Each of the 12 Berlin boroughs is unique in its own way, and well worth a visit. But the Berliners – residents of the biggest and most cosmopolitan of Germany's cities – are happiest at home in their own "village" or local neighbourhood ("Kiez") – from the Akazienkiez in Schöneberg to the Wrangelkiez in Kreuzberg. The boroughs provide the framework – but it is the „Kiez“ which gives Berlin its friendly and familiar character.

This is where the capital's residents go out, meet friends in the local café, shop at the local grocery-store and enjoy that "Berlin feeling": being right in the middle of things but without the hassle.



We have

- ... 37 police stations in Berlin
- ... an average of 52 police-car operations per station daily; this can rise to as many as 78 operations per day

... The Local Police

The Berlin Police Stations

Throughout the city, we are at your service.

The six Local Divisions, each with six or seven police stations, cover the entire city.



The staff of the local stations provide the widest range of police services to the general public. Not only

do they have to be multi-talented but they must be available day and night. When emergency calls (110) are made, local officers are first on the scene. They mediate in disputes, provide help, record accidents, eliminate danger and pursue crime and law-infringements.

The work of a local police-station goes much further than police patrols.

The officers display presence, conduct plain-clothes patrols, take police reports, monitor traffic and direct traffic when traffic-lights fail. They are responsible for the planning and execution of police operations. Local crime – e.g. domestic violence, youth crime and shoplifting – is investigated and passed to the prosecution services. The staff of the local police stations process around half of the entire police prosecutions.

Berlin has

- ... an average of 2,800 demonstrations und 400 processions every year
- ... more than 1,600 major and smaller public sporting events
- ... with Gay Pride, the Carnival of Cultures, Fête de la Musique, the Football World Cup, the European Cup and more, the most major public events



Coming to Berlin for an event ...

Berlin – this is where it happens. This is where to meet. Here you can be heard.

In no other city of Germany do people gather together more often to publically express their opinion on politics, social issues and matters of personal outlook, than in Berlin, the Federal Capital and seat of government.



Berlin is a city of major sporting events. That's no wonder, when there are upwards of 40,000 runners at the start of the Berlin Marathon⁵. Hertha BSC, Alba (Basketball), Füchse (Foxes – Handball), Eisbären (Polar Bears – Ice Hockey) are the names of some of the major-league teams in their respective sports. When they play, their Berlin fans cheer them on.

When it comes to hosting public events, Berlin is a major player. Every year an array of public events takes place in Berlin. From the Carnival of Cultures to Gay Pride and the major Football League Cup, from fans gathering on the “Fan Mile” – we’ve even hosted the World Cup Final – to a public party on New Year’s Eve at the Brandenburg Gate. Participation is everything and, what’s more, it makes you part of it!

... we ensure safety and order

The Riot Police and Mobile Police Squads

Demonstrations, sport events and state visits requiring police support, are our bread and butter. Global events, like the World Cup in 2006, and the annual major events in Berlin are policed by us to ensure public safety.

Operations like these are supported by the **Stand-By Units** and the **Technical Support Units** of the **Riot Police**, as well as the **Stand-By Units** of the **Local Divisions**.

We also lend police support to other Federal States when required, for example, at political summit meetings or the transport of nuclear material. The officers of the Stand-By Units are in service in daily operations: traffic control, combatting crime, technical operations (special traffic movement, illumination) or public transport.

Prevention of Violence – Anti-Conflict-Teams (AKT)

Unique to Berlin are the police **Anti-Konflikt-Teams, AKTs**. They are part of public-policing and are deployed at large demonstrations, sporting and other events. The AKTs engage members of the public, explain police measures and report current information. Their open and personal approach plays a role in defusing conflict and preventing violence.

We deploy

- ... Stand-By and Technical Support Units of the Riot Police
- ... Stand-By Units of the local police
- ... Anti-Conflict-Teams AKTs with officers from all areas of the Berlin Police



AKTs are deployed every year as part of the police measures on 1st May.

On the streets of Berlin ...

Berlin has around

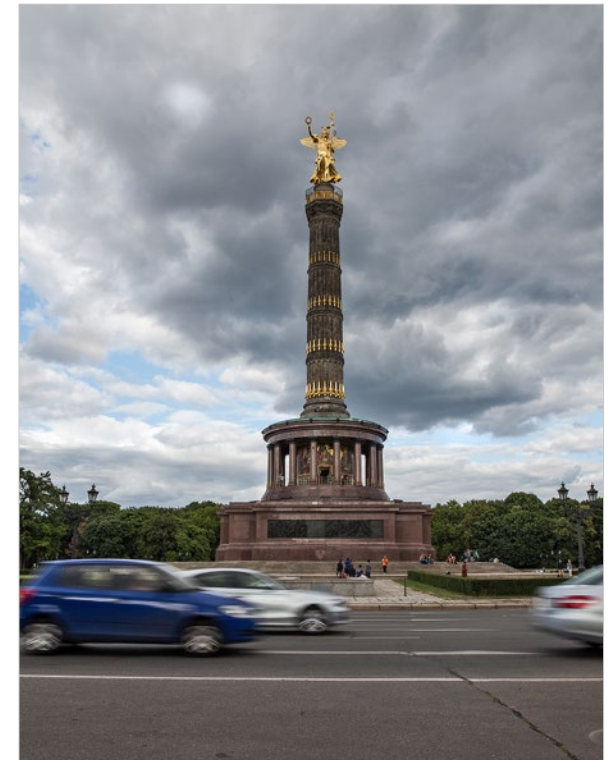
- ... 5,400 km of public highways
- ... 1.3 million registered vehicles

The music of the traffic on the streets of Berlin never stops. Residents and visitors alike are carried over 5,400 km of public highway by car, bicycle, motor-bike, lorry and bus. There are around 1.3 million vehicles registered in Berlin.⁶ That sounds a lot at first, but did you know that car use in Berlin is less than in all the other German cities?

Berlin is the city with the least number of cars per capita in Germany. This is probably due to the well-developed public transport system and the many cycle paths and footpaths.

Although transport means progress and mobility, there are also dangers involved. Every year there are around 130,000 road traffic accidents in Berlin.

Among the most frequent causes of accidents are errors when turning, right-of-way and speeding violations, ignoring traffic lights and driving while under the influence of drugs or alcohol.



... we ensure the safety of road-users

Traffic Service in the local divisions

The Berlin police are called to an accident every 4 minutes. Accident reports are one of our most important duties. An innovation has been the digitalised accident report. Specially-trained officers record the details of serious accidents using modern laser technology and digital photography. This enables a precise analysis and reconstruction of accidents.

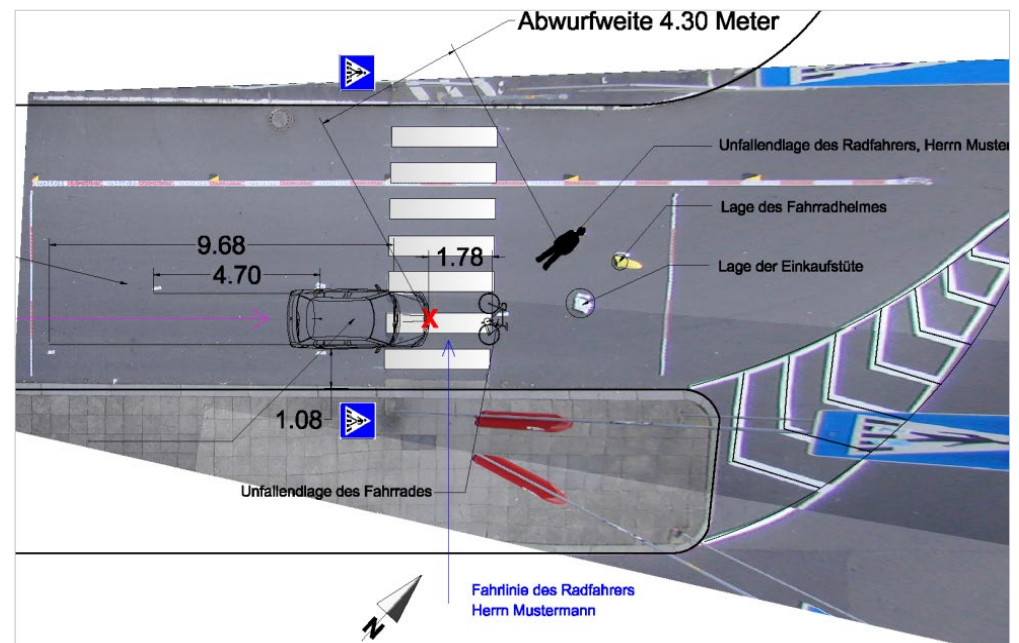
The prevention of road traffic accidents and the monitoring of traffic contribute both to the safety of road traffic and the avoidance of accidents. Road safety advice is given regularly by our traffic safety specialists, who work jointly with many other institutions.

In traffic monitoring, we concentrate on combatting the most frequent causes of accidents. Through the **local Traffic Service**, we are present on the roads every day, conducting speed checks. At irregular intervals during the year, we conduct specialised checks concentrating on a particular criminal offence e.g. driving while under the influence of drugs or alcohol.



We record

- ... a road traffic accident every 4 minutes
- ... around 130,000 accidents per year





Special traffic operations ...

Public events which cause traffic disruption are part and parcel of life in major cities. In Berlin, not only the capital but also the seat of government, these events have a unique quality.

If the President of the United States comes to visit, traffic disruption in the inner-city is inevitable. Visits by heads of state or government dignitaries, which require police protection, take place on an almost daily basis.

Every year major cultural and sporting events are scheduled in Berlin, one of the best known

being the Berlin Marathon. Sports fans take to the streets of the inner-city in motor-cavalcades, to

demonstrate their joy when their team wins an important game. Demonstrations and protest marches, whether by car or on foot, take place on public highways.

High-volume traffic on fast roads – Berlin's 80 kilometres of motorway provide a different level of fast traffic.



Berlin has

- ... the most frequently travelled inner-city motorway in Europe
- ... around 2,000 traffic-lights

... are conducted by the Central Traffic Police

The Central Traffic Service

The Central Traffic Service fulfils a wide-range of special duties arising from the challenges of major city traffic and Berlin's function as the capital.

State visits, demonstrations, motor cavalcades, major sport meetings and mass public events – Escort Command and the Traffic Operations Command prevent traffic chaos.

Representatives from other countries are escorted by motorcycle officers. The "15-Bike-Formation" which escorts visiting heads of state, is something the general public love to see.

The Motorway Service takes care of the traffic on the motorways in Berlin. Duties include the monitoring of traffic and the swiftest possible regulation of dangerous situations arising on this complex traffic network.



The Central Traffic Service monitors other traffic, including commercial vehicles – busses and lorries – while paying attention to compliance with European directives.

The Traffic Information and Operations Centre constantly monitors and analyses traffic situations and manages the operation of traffic-lights and signals throughout the city.

We look after approximately

- ... 200–300 visits of Heads of State and government dignitaries every year
- ... 80 km of motorway (with three motorway intersections, four motorway junctions, 11 tunnels and 54 slip roads)



Using public transport ...

“I’ve been driving around – for hours just around. Engines revving here, piercing in my ear. There’s just nowhere to park, so I’ll be late, sweetheart ...”⁷ Lines from a song by one of Germany’s most well-known musicians! It sums up the situation of car-drivers in Berlin perfectly. And this is why more and more Berliners are changing to public transport. There is nowhere in Berlin which cannot be reached quickly and easily by bus or train. On average, 3.5 million people use the joint public transport networks of Berlin and Brandenburg (VBB) on a daily basis.

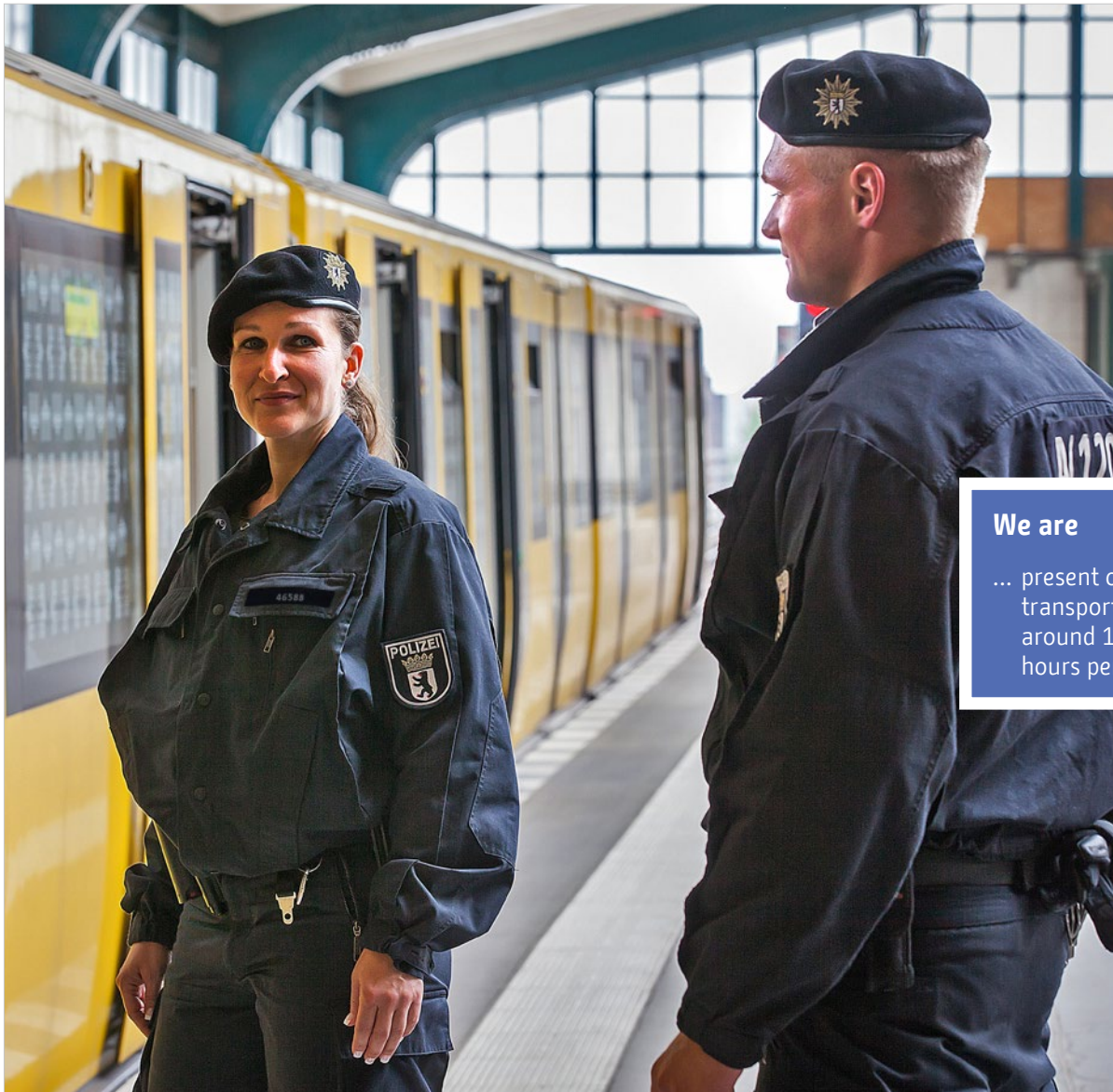
The Berlin U-Bahn (underground railway) is one of the most modern in Europe and is the largest of its kind in Germany.

There are four types of public transport available – S-Bahn (overground railway), U-Bahn, Straßenbahn (tram) und Bus – covering a network of around 2,480 kilometres⁸ in length. That’s the distance between Berlin and Istanbul.

Berlin has around

- ... 1.4 billion travellers on the VBB networks annually
- ... 300 km of tramlines
- ... 150 km of U-Bahn (underground railway)
- ... 330 km of S-Bahn (overground railway)
- ... 1,700 km of bus lines





... we accompany you

The Berlin Police on the public transport network (ÖPNV)

Users of public transport – whether commuting to work, going to school, attending meetings, visiting tourist-attractions, returning home or going out to a club or theatre – want to reach their destination safely. Safety on **public transport** is one of our concerns.

Since 2004, safety on **public transport** has been regulated through a joint-cooperation agreement signed by the Berlin Public Transport Authority (BVG), the S-Bahn Berlin GmbH, German Rail (DB), the Federal Police (Berlin) and the Berlin Police.

We are

... present on the public transport network with around 160,000 man-hours per year

Beside crime prevention campaigns that target specific crime on public transport, such as drug-dealing, property-crime and violence, we **patrol** the underground, bus and tram networks. We want you to feel safe.

Officers from the local police stations patrol the underground stations and trains on a daily basis – either on their own or accompanied by the BVG's security staff. In the evenings and late at night, members of the Riot Police demonstrate their presence and can be addressed by you at any time.

There is a member of the Berlin Police staff permanently assigned to the Safety Centre of the BVG on a 24 hour basis. This makes for an optimal information flow, resulting in more effective cooperation with the public transport authority.



Embassies and special facilities ...

The flags of the world fly from the embassies in the city. The golden dome of the new synagogue in Berlin's Mitte can be seen for miles.

Berlin is Germany's seat of government. Most embassies and diplomatic missions are here. There are around 170 diplomatic representations from all over the world, including the embassies of the United States, United Kingdom, Russia and Israel. The Vienna Convention on Diplomatic Relations obliges the host country to grant protection to diplomatic missions.

Faith communities of different confessions live side by side. Although more than 50% of the Berliners profess to no religious beliefs, all major religions are represented in the city. Christian communities are the largest group, with around 1 million members. The Islamic community numbers around 250,000. The Jewish community, with ca. 11,000 members, is the largest of its kind in Germany. The highly-diversified Jewish infrastructure includes synagogues, schools, Kindergartens, adult-education and social facilities.

Berlin has approx.

- ... 170 diplomatic missions
- ... 1 million members of the Christian community
- ... 250,000 members of the Islamic community
- ... 11,000 members of the Jewish community
- ... 20,000 members of other faith-communities⁹

There are 20,000 members of other faith communities in Berlin.

Politics are always "on the move". The media brings reports of new events every day. Political developments, such as civil disturbance within a country and the interdependence of world politics, can directly affect the security situation in Berlin.



... are guarded by us

Guard and Patrol Duty – Central Facility Protection (ZOS)

The Central Facility Protection **ZOS**, as a division of the Berlin Police, is unique amongst the police forces of the German Länder. Nowhere else in German is there a police division charged solely with facility protection.

There are currently around 700 protected facilities, for example:

- diplomatic missions such as embassies and residences
- Jewish facilities such as synagogues, schools and Kindergarten
- Federal Government buildings and facilities of the city of Berlin.

The level of protection is based on the threat-assessment report of the Berlin CID (LKA).

The ZOS protects

... around 700 vulnerable facilities:
diplomatic, Jewish and Federal and Berlin government buildings

The ZOS has around 1,100 members of staff who are in service “round the clock”. Police officers in facility protection wear a police uniform, which can be recognised by black epaulettes and a black cap-band.



On the darker side of town ...

The history of crime in Berlin is as old as the city itself. Crime takes place everywhere, is found in all age groups and at all levels of society.

In comparison with other major cities, Berlin is a very safe place. There are no areas of Berlin where someone needs to feel unsafe.



Details of criminal acts in Berlin are published every year in the Police Crime Statistics Report (PKS).¹⁰

Theft is one of the more frequently committed criminal offences. In the hustle and bustle of a major city, the nimble fingers and cunning tricks of pick-pockets make use of every opportunity to steal from residents and tourists alike.

Be on your guard at all times!

Crime in Berlin

... details with current figures and developments can be found at:
<http://www.berlin.de/polizei/kriminalitaet/pks.html>



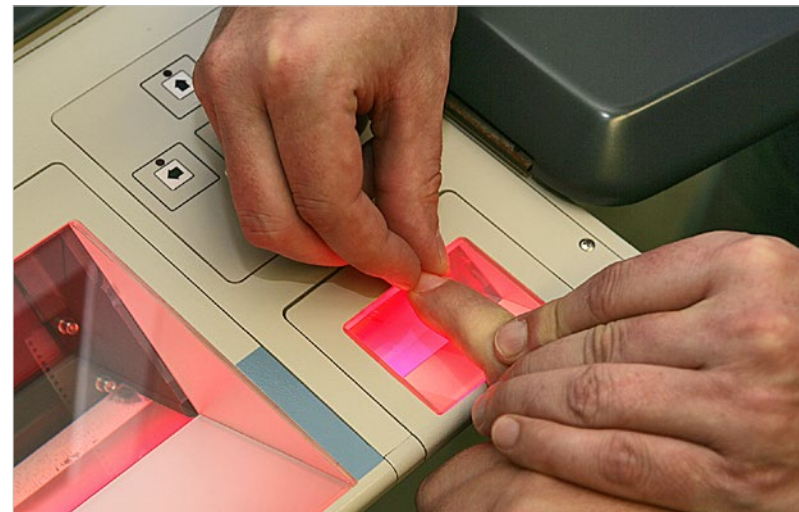
... we shine a light

The Criminal Investigation Division (LKA) and the Directorate, Combatting-Crime

In addition to the uniformed police, the officers of the CID are hot on the heels of criminals. The local police divisions are responsible for the boroughs of the city. The “Kripo” (German standard term for the Criminal Police) is part of the Directorate, Combatting-Crime (VB). The 1st Inspectorate of VB 1 is in operation around the clock and takes all measures required for criminal investigations. This 24-hour CID readiness provides a significant point of intersection with the work of the police station.

The officers of VB II and III investigate violent crime and crime against property. Their investigations are supported by strategic units.

In contrast to most other criminal investigation departments in Germany, the Berlin LKA conducts investigations. All acts of serious and major crime, as well as crime committed by perpetrators from other regions, are processed here. The Berlin LKA is also the contact-point for the Federal Criminal Investigation Office – Bundeskriminalamt.



The areas of investigation are very wide-ranging, from crimes against persons to economic crime, fraud and crime against property, to organised crime and drug crime. The remit also includes counter-terrorism and search for persons. Joint investigation groups have been established where areas of responsibility overlap with other authorities, for example with the customs and excise offices, the Brandenburg CID and Federal Criminal Investigation Office.

Police criminal investigations are conducted by

- ... The Directorate VB in Local Divisions 1–6
- ... The LKA (CID)



Scientific search ...

Berlin is one of the major European science and research regions. Some 200,000 people from all over the world teach, research, study or are otherwise employed at four universities, the Charite School of Medicine, seven universities for applied science, four colleges of the arts, as well as private colleges and research institutes.¹¹

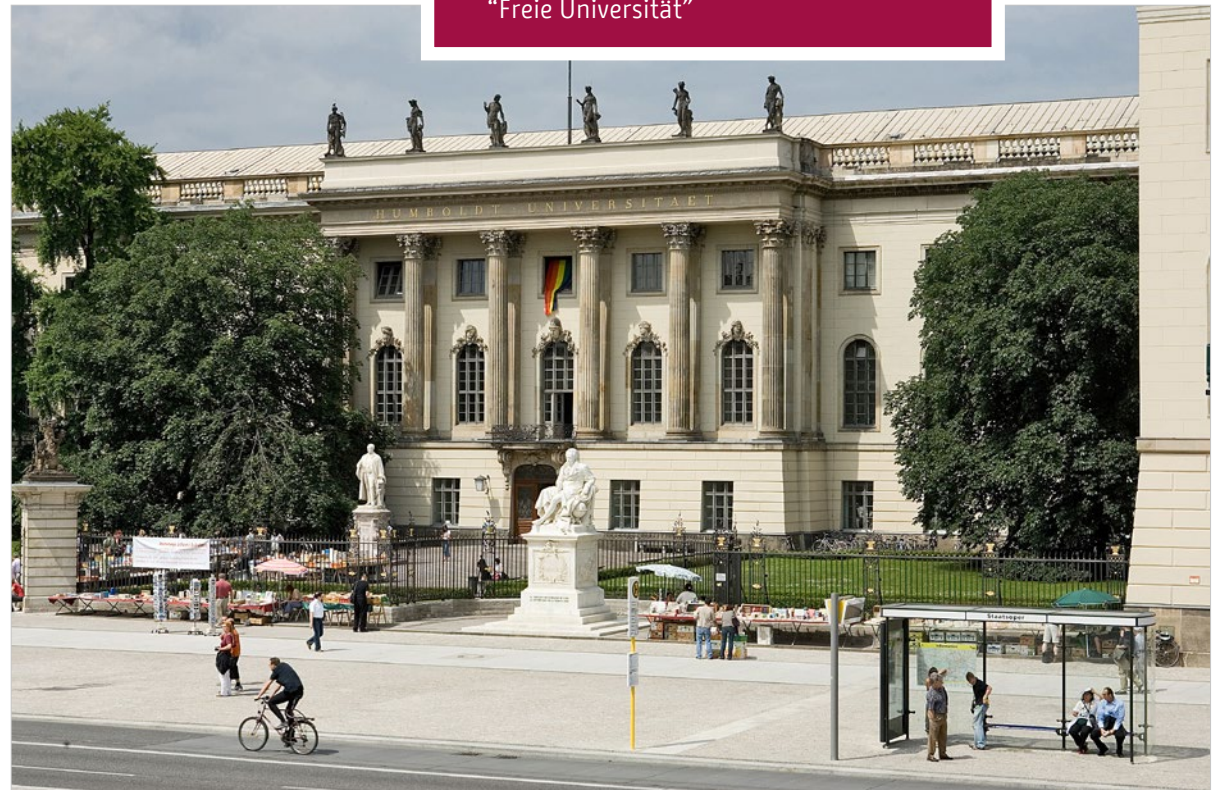
Berlin's universities are especially attractive to women academics and scientists. The proportion of women professors in Berlin is around 30%, giving Berlin a place amongst the leaders in comparison with the other German Länder.¹²

Berlin, the city of learning, is characterised by excellence, diversity, interaction between research and development, education and training and committed businesses.¹³



Berlin's Centres of Knowledge include:

- ... Adlershof Science and Technology Park for science, economics and media
- ... Buch, Life Sciences Campus
- ... Charlottenburg with the "Technische Universität" and the Berlin University of the Arts
- ... Mitte with the Humboldt-University and the "Charité" University-Hospital
- ... Dahlem with Berlin's largest university, the "Freie Universität"



... for criminals

The Forensic Laboratory (LKA KT)

LKA KT is our centre of competence for forensic science and technology. With more than 90 different forensic disciplines, this department is one of the largest of its kind in Germany. Tests and analysis are performed at the request of the police, the prosecution service, the law courts and other authorities. The results help to alleviate situations of serious risk of danger and can take the form of reports or expert advice in investigations or may be presented directly to the court in criminal proceedings.

Scientific officers from the areas of biology, chemistry, physics, information technology, weapons and ammunition technology, ballistics, explosive technology

and many other disciplines, provide a high level of expertise. On the international level, Berlin LKA KT is a member of the European Network of Forensic Science Institutes (ENFSI).

Around 150,000 requests are submitted to the Forensic Laboratory annually.

These include:

- ... 42,000 requests for dactyloscopic traces (finger-prints)
- ... 17,200 requests for materials technology
- ... 14,000 requests for DNA-Analysis and
- ... 12,000 requests for toxicology/narcotics and
- ... 185 deployments (operations) of the mobile and stationary environmental analysis



The hostage desperately pleading with the captor ...

Thankfully the following situation is not part of police routine in Berlin:

“It is Friday, 21.12.2012, 15:30 hours, Berlin-Zehlendorf: an armed-robber has taken a member of staff hostage in a local branch of a bank. He is demanding 500,000 Euros and threatening to blow up the building with a bomb ...”

In Berlin

... hostage-taking is very rare

Hostage-taking, kidnapping, abduction – volatile situations which require a professional response.

The Berlin Police Special Command for Major-Crime has been informed of the situation. Officers and staff from many different units are summoned immediately to the Command Centre. The crime-scene has been cordoned off; police-negotiators have established contact with the hostage-taker. The Special Forces units (SEK and MEK) and emergency services are in situ. Bomb disposal experts are prepared for action.

Police Command can count on its specialists.



...rescued through professional expertise

Special Units SEK and MEK at the Berlin CID

The special units SEK and MEK (Special and Mobile Operations Units, which are deployed in situations requiring the use of special weapons and tactics) are part of the Berlin CID and serve police operations requiring special expertise.

When hostages are taken or people are abducted, the Special Operations Unit falls under the scrutiny of the public eye. However, the bulk of their work is carried out in the support of police operations e.g. warrant-searches and arrests where significant danger has been assessed, close protection of persons and in the transport of prisoners.

The MEK is engaged in the observation of suspects in the area of organised crime and political extremism, especially Islamist terrorism. The MEK is also deployed in serious-crime and major-crime situations.

The Bomb Disposal Experts

The Forensic Laboratory includes specialists who deal with explosives. They are deployed when criminals threaten to use bombs. They are also deployed during state visits in preventive measures. Many institutions, including the law-courts, ask members of the unit for expert-opinion on improvised explosive devices (IED).



We have annually

- ... ca. 500-600 operations requiring the SEK, higher than any other police force in Germany
- ... ca. 800 operations requiring the full-range of bomb disposal expertise

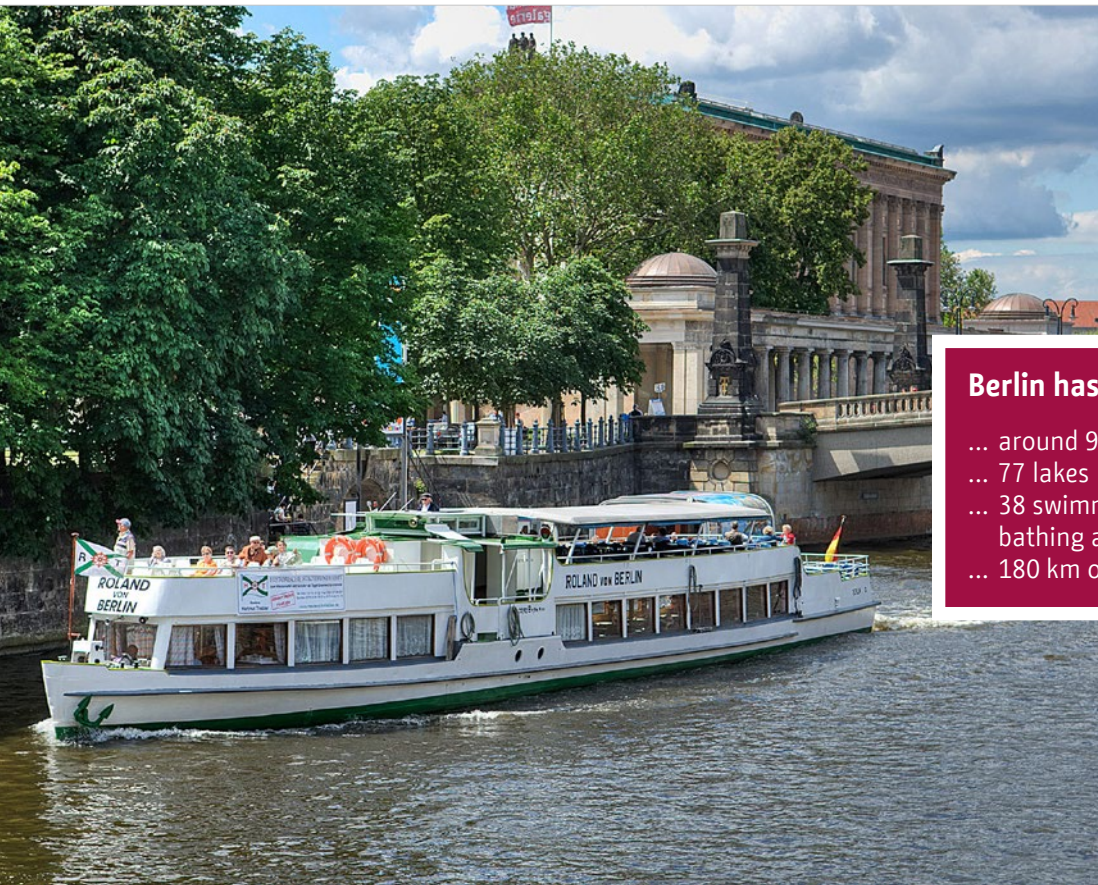


Berlin on the water ...

Did you know that Berlin has five times more bridges than Venice?

Berlin has two major rivers, the Spree and the Havel, as well as canals and lakes on which excursion ships and boats operate. Several shipping companies offer boat trips and transport via the waterways. A sight-seeing tour from the water is fascinating. Berliners and tourists alike can experience the city from a totally different perspective.

Enjoy the popular “Bridge Tour” or see the sights of the inner city from an excursion ship – go past the “Kanzleramt” (the residence of the Chancellor) to the “Reichstag” (Federal Parliament) and many other Parliament Buildings. Continue on through the “Nikolai-Quarter” or simply relax on a cruise on the “Müggelsee” or on a trip through the Havel lakes.



Berlin has

- ... around 970 bridges
- ... 77 lakes
- ... 38 swimming and bathing areas
- ... 180 km of waterways

Summer in Berlin is a special experience. The vast choice of venues for open-air and indoor swimming makes Berlin the swimmers' capital of the world. The city's rivers converge in various places to form large, calm lakes. Most well-known of these are the Greater Wannsee and the Greater Müggelsee. There are also numerous smaller lakes such as the Oranke Lake, the “Weissen See” (White Lake) and the “Grünwald-seenkette” (a chain of smaller lakes in the western part of the city).

... police on boats

The River Police

The policing of Berlin's waterways and lakes is the responsibility of the River Police (WSP). Duties are performed via police-boats on the rivers and canals, in the harbours and on banks which are only accessible from the water. 24 hours a day, the River Police demonstrate their presence and availability.

At our disposal we have:

- ... 3 WSP police stations
- ... 16 police boats
- ... 5 unmarked boats
- ... a sailing boat
- ... a work-force of around 180 staff members
- ... 18 divers in the technical operations units of the Riot Police

As well as monitoring shipping traffic, the range of duties includes fighting crime on the waterways and boats, and boat-related crime. In winter, when Berlin's waters are frozen-over, the specialised vessels of the "Ice Rescue Service" come into play. Crime prevention starts with infants – the WSP use the programme "Bobby Bear and Hans Hare – Danger on the Ice" to demonstrate safety to the youngest in society. Crime prevention offers a cost free service involving the engraving of boats and nautical devices with an individual number.



Police Divers in the Technical Units

Police divers are our specialists under water. They support operations, especially with their ability to look for and locate evidence, traces, other objects and bodies in the city's waters. They take measures to protect the environment, close off waterways, are involved in inspections of the waters and save lives.

The Berlin air ...

On hearing the words “Das ist die Berliner Luft Luft Luft ...” (lit. “This is the Berlin air air air ...”), the melody of the popular song of the same name sounds in everyone’s ears. This operetta-aria was composed in 1904 by Paul Lincke and has become an unofficial anthem of the city. The song originally referred to the more relaxed attitude to life in the Berlin of the time. The climate in Berlin, however, does actually differ from other cities in Germany. The average annual temperature is 10 °C. In the summer months of July and August, the temperature reaches an average of around 18 °C. Berlin is one of the warmest regions of Germany. The many parks and wooded-areas, such as the “Tiergarten” and the “Grunewald”, contribute to the freshness of the air in Berlin.

The emission of nitric oxide and respirable dust, however, remains a challenge for the Berlin air and for the Berliners. In 2008, Berlin was one of the first German cities to introduce a low-emission-zone and, in 2010, tightened the conditions. This means

that only vehicles with a fine particle sticker may travel within the Berlin-Ring (city-rail ring). Berlin has been a forerunner in the protection from the exposure to respirable dust and nitric oxide and in improving the quality of the air.¹⁴

The development of the new international airport “Berlin-Brandenburg” (BER) is currently the most major infrastructure project. After completion, the entire air traffic of the region Berlin-Brandenburg will be concentrated in the south-east of the city.

Berlin has

- ... an average annual temperature of 10 °C
- ... a low-emission-zone
- ... after completion a major international airport Berlin-Brandenburg (BER)



... through which we fly

The Helicopter Squad

The Police Helicopter Squad was established in 1992. Since 2004, we have been operating a Eurocopter EC135 T2+ jointly with the Federal Police.

Our operations are varied and range from observation to combatting crime, searches, danger-prevention and traffic-monitoring.

The helicopter has additional equipment which can be used for video and thermal-picturing. We are equipped to carry out cartographic cartographic photography and the transmission of television broadcasts for police operations.

The UAS-Pol (Unmanned Aircraft System)

A further part of our air equipment is the Unmanned Aircraft System (UAS-POL) of the Forensic Laboratory. Often erroneously referred to as a “drone”, this instrument is an unmanned aircraft. It can capture photographic and video aerial-images. It is used to document crime-scenes in the areas of serious and major crime. It also records environmental damage, as well as photographing major disasters and serious road traffic accidents.



We have

- ... around 320 operational helicopter flights per year
- ... our air-base in Berlin-Ahrensfelde on the north-eastern outskirts of the city
- ... approx. 15-20 operational flights with the unmanned UAS-Pol annually





Four-legged friends ...

Dogs are faithful friends; a dog is a child's playmate and a companion for elderly people. Berliners are animal lovers.

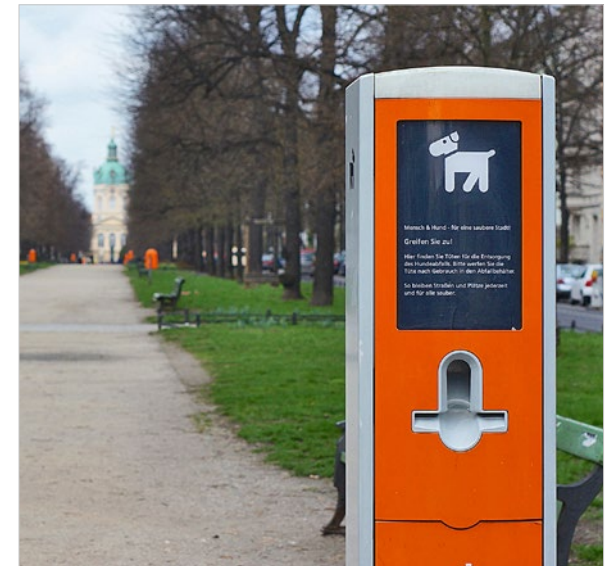
In 2012, a popular dog-lovers' magazine chose Berlin as the most dog-friendly city in Germany. Berlin's canine residents enjoy the better side of Berlin: plenty of places for "walkies" is how the jury made their decision.

The estimated 150,000 dogs can be seen on Berlin's streets and parks.

Berlin

... is the dog-friendliest city in Germany
... has around 150,000 dogs

There are, however, local bye-laws governing the keeping of dogs. Dog-owners are required to ensure that dogs are not allowed to foul public areas; otherwise a fine can be imposed. Special bag-dispensers have been placed at many locations in the city for this purpose.



... our friends and helpers

The Police Dog Unit

For almost 100 years, dogs have been in police service. Today, even in spite of modern technology, canine abilities are still required.

The Berlin Police uses dogs mainly for tracking, due to their sense of smell. They are used to trace drugs, explosives, bodies, human blood, tobacco and combustion devices.

Having used dogs from other police forces with considerable success in cases of missing persons and homicide, we now have our own trained “man-trailer” dogs. Human-tracking dogs are specially trained to follow individual, human scent molecules. These scent molecules are present in dead skin cells, which are continually secreted by humans.

We have

- ... around 130 police dogs
- ... mainly German and Belgian Shepherds, Rottweilers and hunting-dogs in service



Dogs, however, are not just used because of their sense of smell. Dogs are also used to ensure successful policing at popular sport meetings, demonstrations and other mass-public events.



Berlin for adults and children ...

In Berlin there are around

... 510,000 children
... 2,310,000 adults
between 18 and
65 years old
... 660,000 senior citizens

Life is good in Berlin for children and adults alike. Among the 3.3 million inhabitants, there are around 15% children and youths, approx. 19% senior citizens (over 65) and 66% adults (18–65 year olds).¹⁵



Berlin is a child-friendly capital city and has a lot to offer to its youngest residents.

Adventure-parks, recreational areas, sports clubs,

Interactive museums – Berlin guarantees fun and adventure for children. The kids of the capital attend around 2,000 Kindergartens and 430 primary schools.

There is plenty on offer for teenagers in the city. More than 500 secondary schools provide education for Berlin's youngsters. Youth clubs, cultural activities and sports clubs ensure that teenagers and their friends won't be bored.

There is a tempting array of activities for grown-ups: the parks, lakes, cafés or restaurants, shopping-centres, museum, cinemas, ballrooms and theatres – they all promise enjoyment and relaxation.



We

- ... actively approach different target-groups
- ... have 37 designated crime prevention officers in our police stations
- ... offer a wide-range of information on our website – <http://www.berlin.de/polizei/praevention/>

... Crime Prevention for all ages

A comprehensive range of crime prevention projects and special events demonstrates that crime prevention is one of our most important duties and goals – along with the pursuit of criminals. Besides the Central Crime Prevention Unit located at the CID, every local division has a coordinator for different target-groups. A designated crime-prevention officer is available in every police station.

Children and Youth

In schools, we offer anti-violence seminars. We also have the project “Brummi” – a bear-puppet, who demonstrates to primary school children how to say no and to assert themselves. Our puppet-show for road-safety is very popular with the younger children. The local divisions all have designated “Youth Officers”, who are available to deal with police-matters which interest or affect young people. The station crime-prevention officers maintain contact within their local communities. Many programmes are designed to make youth aware of the effects of drugs, alcohol and violence.

Victims of Crime

Victim Protection Officers/Coordinators for domestic violence and stalking ensure that help and support in these areas is available, even after the actual police call-out has ended.

In order to make our **senior citizens** aware of the dangers of crime, we provide an array of printed information and staged events, where we demonstrate the “modus operandi” of fraudsters and confidence tricksters. We offer advice in the areas of “neighbourhood watch”, door-to-door “salesmen” and pick-pockets.

Security advice is available at the advice centre for **technical crime prevention**. We give immediate advice on how to protect your home and prevent burglary. We provide advice on burglar-alarms with a direct connection to the police.



We support ...

Whether young or old – Berliners enjoy cycling. It gets them from A to B, keeps them fit and is eco-friendly. It also provides the perfect opportunity to experience the city and its urban green-spaces at first-hand.

The extensive network of bicycle-paths and cycle-tracks makes it easier for Berliners to leave the car and “get on their bikes”.



Berlin has around

- ... 720 bicycles per 1,000 residents
- ... 7,000 traffic accidents involving cyclists per year
- ... 20,000–25,000 cases of bicycle theft per year



In 2011, there were 721 bicycles per 1,000 residents.¹⁶ It doesn't stop there. Guided city- tours, courier services and taxi services by bicycle are all available in this “two-wheeler”-friendly city.

However – around 7,000 cyclists are involved in traffic accidents every year. On the roads, cyclists generally are more at risk of serious accident.

It is an equally unpleasant experience, when the trusty two-wheeler is no longer where it was left.

... Berlin's cyclists

Crime-Prevention – Bicycles and Road-Traffic

A coding programme for bicycles makes it easier to find stolen bikes and makes it more difficult for thieves and dealers in stolen bicycles. We will code your bicycle free of charge. Either make an appointment or watch out for our special “Bicycle Action” days.

In order to minimise for crime, we offer advice to city-planners, e.g. improved street-lighting, improved visibility, etc.

Preventing and combatting road traffic accidents is part of our programme to increase traffic safety for cyclists.

We have

- ... more information on road safety campaigns available at: <http://www.polizei.berlin.de>
- ... more than 70 designated road safety advisors city-wide in the six Local Divisions



We have over 70 designated traffic safety officers in the local police stations. They are active in giving road-safety advice, starting with the youngest on two – or even three – wheels.

They also offer advice and training to groups such as youth groups, commuters and senior citizens, emphasising specific road-safety issues.

At the beginning of the new school year, we have a special programme for school-beginners, which focusses on road-safety on the way to and from school.





Berlin, a city of diversity ...

Berlin is a city of diversity in which people of different culture and creeds live together. More than a quarter of the Berlin population belongs to an ethnic community and there are 180 different nationalities in the city.¹⁷ This factor makes a major contribution to the unmistakeable open-mindedness of Berlin.

Berlin is also home to people of different sexual orientation or identity. Berlin has a well-developed infrastructure for the lesbian, gay, bisexual and transgender (LGBT) community.



In Berlin there are

- ... people of 180 nationalities
- ... people of different cultures and creeds
- ... an estimated 300,000 members of the LGBT community

... acceptance and inclusion

Designated contact for intercultural affairs

Cultural and religious diversity calls for respect and tolerance, open-mindedness and a willingness to engage in dialogue. Police operations, free from prejudice and conflict, are a condition of winning the trust of the people of Berlin. Intercultural affairs are an integral part of police education and training, of our networking, crime-prevention and daily routine service. We are proud of the fact that our annual intake continues to reflect a growing number of candidates for training from our ethnic communities.

The police partners for intercultural affairs are available to give advice in police matters to organisations, groups and individual citizens.



You can reach our designated officers by telephone and email:

... intercultural affairs:
Tel.: +49 30 4664-900500 and
integrationsbuero@polizei.berlin.de
... LGBT Community: +49 30 4664-979444
and lsbt@polizei.berlin.de



Designated contact for the LGBT community

It is a matter of course that we treat everyone we meet with respect. Our designated contacts for the LGBT community work on the prevention and solving of crime against members of this community.

Our goal is for people to report crime without fear of discrimination. Our designated officers foster good contacts within the community networks and mediate in cases of complaint. They are responsible for the training-course module “Hate Crime against Sexual Orientation”.

Interesting and varied ...

Did you know that Berlin is the favourite place for university study in Germany?¹⁸

Students come from all the German Länder to study in Berlin. Around 160,000 students quench their thirst for knowledge at Berlin's four universities, four colleges of art and seven universities for applied science.¹⁹



Berlin offers professional training in a wide-range of occupations requiring apprenticeship.

In Berlin

- ... training in around 100 trades and professions is available
- ... around 160,000 students are registered



In the crafts and regulated professions, from A as in Accommodation Manager to Z as in Zookeeper, more than 100 different trades and professions are available. It's no wonder that young people are drawn to Berlin. The majority of the newest "newcomers" are aged between 18 and 32.²⁰

... career opportunities

Training with the Berlin Police

As a police force, we offer training to all those who wish to face the challenges of policing in a multicultural, cosmopolitan city. Entry to the higher service and police management requires the successful completion of a university degree.

The practice-oriented police training takes 2 ½ years and is carried out at the Police School in Berlin-Ruhleben. The B.A. degree course for entry to the higher service covers 3 years at the Berlin School of Economics and Law (Hochschule für Wirtschaft und Recht Berlin).

After completion of training or graduation, new entrants stand on the threshold of very wide-ranging career opportunities.

We offer opportunities for advancement to serving police officers. Successful completion of the 2-year Master degree course at the Police College in Münster, “Public Administration – Police Management” is the first rung on a career-ladder leading to the highest ranks of police leadership.



In brief

- ... Find out more about career opportunities with the Berlin Police and our current vacancies at: <http://www.berlin.de/polizei/beruf/index.html> or by calling: +49 30 3323003 or at our careers advisory service, Keibelstraße 36, 10178 Berlin.
- ... Starting dates are 1st March/ 1st September for the police training and 1st April/1st October for the higher service.
- ... Application can be made online. Suitability is determined by a computer test, further tests of physical health and ability and a personal interview.



What many do not know:

As well as around 16,500 police officers, we also employ around 5,000 professional staff with a wide-range of duties including medical personnel, photographers, engineers, IT-professionals, scientists, etc.





Tracing the history ...

Berlin is an historical city. The unique story of Berlin begins with her foundation in the 13th century. Since then, Berlin has so often been subject to fundamental change, that the face of Berlin has changed more than any other of the world's major cities. As we say: "Berlin ist nicht, Berlin wird!" (lit. Berlin is not, Berlin will be!)

Berlin's significance has grown throughout the ages, although there were golden ages and times of prospects dear.

It seems like just yesterday but yet so far away – Berlin was a divided city for 40 long years – East-Berlin and Berlin (West). Today, Berlin has managed the change to become one of the most vibrant cities of Europe.

But time has also left traces behind – we invite you to discover them. Follow me!



Berlin has

- ... celebrated 775 years of city history (2012)
- ... around 180 museums and collections, more museums than there are rainy-days in the year²¹

We have

... more than 200 years of police history
 ... a police library and archive
 Opening times:
 Mon. to Wed. 09:00-15:00 hours
 Groups: Mon. to Fri. (By appointment only),
 tel: +49 30 4664-994762
 or email: phs@polizei.berlin.de

... of the Berlin Police

More than 200 years have passed, since the „Royal Prussian Police“ was founded in 1809.

How has the police uniform changed over the years? Which crimes were the police involved in during the Nazi-period? How have the separate police forces of the divided city merged and grown together since 1989?

Answers to these questions and to the history of the Berlin Police can be found at the **“Polizeihistorische Sammlung”** (Police Museum) at Police Headquarters (Polizeipräsidium), Platz der Luftbrücke. Here you can not only trace the development of the Berlin Police from the foundation of the Police Headquarters, but also gain insight into the work of the police today.

The Police Archive, with over 5,000 books and the historical collection of documents and photographs, is a reference-point for academic research.



Europe in Berlin ...

The European Union has contributed hugely to an unparalleled period of peace in Europe. After the destruction of the last war and the decades of division, a city like Berlin can really appreciate the value of peace.

A strong and stable European Union is of central importance for the democratic, social and ecological development of Berlin. Being a major city on the border between East and West has given Berlin a special role among the cities of Europe.

Berlin's European policy has focussed on promoting the interests of Berlin, intensifying cross-border cooperation and strengthening European ideals.

The European Structural Funds support regional projects within Europe. The city of Berlin has realised projects worth 1.2 billion Euros in the period 2007–2013.²²



In European affairs, Berlin is represented on the following bodies:

- ... European Conference of Ministers (of the German Länder)
- ... Federal Council (Upper House of the German Parliament)
- ... European Parliament (7 Berlin MEP's)
- ... Office of Berlin at the EU
- ... City networks e.g. "Eurocities" etc.

Berlin Police international

- ... nine twinning projects between 2003 and 2009. Partner countries: Poland, Latvia, Estonia, Hungary and Turkey
- ... eight Leonardo-da-Vinci-Projects since 2008: Almost 90 members of the Berlin police force have been deployed to foreign police forces within a professional development programme
- ... since 1995, 247 Berlin police officers (33 of which are female officers) have taken part in multinational police missions (as of April 2013)

... the Berlin Police in Europe

We are engaged in and for Europe in various EU-financed projects.

Mention should be given to twinning projects, preparing countries to meet the requirements for new member states and to strengthen their institutional and administrative capacity. We are engaged in the EU “Leonardo da Vinci-Programme” for professional development.

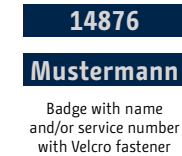
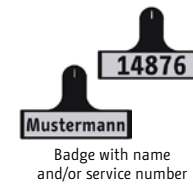
Since 1995 within the framework of Civilian Crisis Management, we have deployed officers to multinational task forces, such as EULEX (Kosovo), EUPM (Bosnien-Herzegovina) and further afield with EUPOL (Afghanistan and South Sudan).

Since 2008, we have been involved in the ECPN-Network (European Capitals’ Police Network). This presents a forum for exchanging experience and best-practice.

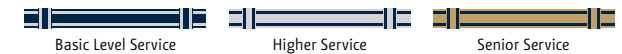


Badges and ID Cards of the Berlin Police

Uniformed Police



Cap bands



River Police



Civilian Staff in Police Custody (GD) / Facility Protection (OS) / Police Service (SOD)



CID Identification Disc and ID Card



Criminal Investigation Police (CID)



Civilian Staff in GD, OS, SOD



Uniformed Police



Trainee



Administration



Police Stations in the Boroughs



Index of Footnotes

- ¹ Berlin Tourismus & Kongress GmbH, <http://www.visitberlin.de/de/artikel/berlin-in-zahlen>, Press release, September, 2013.
- ² Berlin Tourismus & Kongress GmbH, <http://press.visitberlin.de/de/feature/berlin-top-reisedestination-in-europa>, February, 2013.
- ³ Amt für Statistik Berlin-Brandenburg, December, 2012.
- ⁴ Berlin Tourismus & Kongress GmbH, <http://www.visitberlin.de/de/artikel/berlin-in-zahlen>, Press release, September 2013.
- ⁵ Berlin Marathon – berlin.de, <http://www.berlin.de/special/sport-und-fitness/events/>, (as of October, 2013).
- ⁶ Amt für Statistik Berlin-Brandenburg, December, 2012.
- ⁷ Herbert Grönemeyer, Refrain from the song “Mambo”, 1984.
- ⁸ Amt für Statistik Berlin-Brandenburg, December, 2012.
- ⁹ Amt für Statistik Berlin-Brandenburg, December, 2012.
- ¹⁰ Berlin Police, <http://www.berlin.de/polizei/kriminalitaet/pks.html>, (as of October, 2013).
- ¹¹ Senatsverwaltung für Bildung, Jugend und Wissenschaft Berlin, <http://www.berlin.de/sen/bjw/>, (as of October, 2013).
- ¹² Presse- und Informationsamt des Landes Berlin, “Berlin – Eine Erfolgsgeschichte” (Berlin – A Success Story), 2013.
- ¹³ Berlin Partner für Wirtschaft und Technologie GmbH, <http://www.berlin-sciences.com/ort-berlin/orte-des-wissens/>, (as of 1 July, 2013).
- ¹⁴ Senatsverwaltung für Stadtentwicklung und Umwelt, http://www.stadtentwicklung.berlin.de/umwelt/luftqualitaet/de/luftreinhalteplan/umweltzone_allgemeines.shtml#u1, (as of October, 2013).
- ¹⁵ Amt für Statistik Berlin-Brandenburg, December, 2012.
- ¹⁶ Presse- und Informationsamt des Landes Berlin, “Berlin – Eine Erfolgsgeschichte” (Berlin – A Success Story), 2013.
- ¹⁷ Amt für Statistik Berlin-Brandenburg, December, 2012.
- ¹⁸ Presse- und Informationsamt des Landes Berlin, “Berlin – Eine Erfolgsgeschichte” (Berlin – A Success Story), 2013.
- ¹⁹ Berlin Tourismus & Kongress GmbH, <http://www.visitberlin.de/de/artikel/berlin-in-zahlen>, Press release, September, 2013.
- ²⁰ Presse- und Informationsamt des Landes Berlin, “Berlin – Eine Erfolgsgeschichte” (Berlin – A Success Story), 2013.
- ²¹ Berlin Tourismus & Kongress GmbH, <http://www.visitberlin.de/de/artikel/berlin-in-zahlen>, Press release, September 2013.
- ²² Der Reg. Bürgermeister von Berlin – Senatskanzlei – Abt. I, Referat Angelegenheiten der EU, <http://www.berlin.de/rbmskzl/europa>, (as of May, 2013).

Index of Photos

Berlin-information

p. 8	left	TV Tower @visitBerlin/Scholvien	p. 16	left	Potsdamer Platz @Annette Graul	p. 36	left	Long Night of Science @Lange Nacht der Wissenschaften
	right	Unter den Linden Boulevard @visitBerlin/Scholvien		right	Victory Column @Polizei Berlin		right	Seniors in the Park Lietzensee Berlin-Charlottenburg @Polizei Berlin
p. 10		City West (1) @visitBerlin/Scholvien	p. 18	left	Berlin Marathon (4) @visitBerlin/Scholvien	p. 38	left	Children riding their bikes in front of Brandenburg Gate @visitBerlin/Rasmus
p. 12	left	Mauerpark @visitBerlin/Günter Steffen		right	motorcavalcades of fans Berliner Eisbären (ice hockey) @Polizei Berlin (Dir ZA ZVKD 1, Oliver Hartmann)		right	@Polizei Berlin (PPr St 14, Jan Osenbrüg)
p. 14	left	FIFA Fanfest Berlin (3) © ArGe Fanfest Berlin	p. 20		Tram Friedrichstrasse Station @Polizei Berlin	p. 40	left	Carnival of Cultures (3)@visitBerlin/Lindemann
	right	Olympic Stadium with fireworks @Berlin Partner/FTB-Werbefotografie	p. 22	left	New Synagogue @visitBerlin/Scholvien		right	Christopher Street Day Berlin @visitBerlin/Günter Steffen
				right	Reichstag @visitBerlin/Scholvien	p. 42	left	Technische Universität Berlin @visitBerlin/Scholvien
			p. 24		@Polizei Berlin		right	Students @Hochschule für Wirtschaft und Recht Berlin
			p. 26	left	A female scientist @Tatjana Meyer	p. 44	left	Checkpoint Charlie @visitBerlin/Scholvien
				right	Humboldt Universität @visitBerlin/Scholvien		right	Museum Island @visitBerlin/Scholvien
			p. 28		Photo of a crime scene of a bank @Polizei Berlin	p. 46	left	Brandenburg Gate (9) @visitBerlin/Scholvien
			p. 30	left	Spring time boating (3) @visitBerlin/Scholvien		right	Flags Messegelände Berlin Funkturm (Trade Fair Centre Berlin) @Polizei Berlin (Dir 2 VB I, Dennis Ludwig)
				right	großer Müggelsee @BerlinPartner/FTB-Werbefotografie	S. 52		Berlin city hall @Berlin Partner / FTB-Werbefotografie
			p. 32	left	A can of Berlin air in front of the Airlift Memorial “hunger rake” @Polizei Berlin			
				right	Aerial view City East/TV Tower @Polizei Berlin (Dir ZA WSP PHuSt, Jens Lange)			
			p. 34	left	A Berlin dog @Annette Graul			
				right	bag-dispenser in front of Schloss Charlottenburg @Polizei Berlin (Dir 2 VB I, Dennis Ludwig)			



Police-information

p. 3	©Tatjana Meyer	p. 35 left	puppies Man-Trailer ©Andreas Klug
p. 4/7	©Polizei Berlin	right	©Tatjana Meyer
p. 9 left	©Polizei Berlin	p. 37 left	©Tatjana Meyer
	(ZSE V, Christian Haegele)	right	©Polizei Berlin (Dir 3 A 35 PräVBA)
right	©Tatjana Meyer	p. 39 left	©Polizei Berlin (Dir 1 St 41)
p. 11	©Polizei Berlin (ZSE IV B 23)	right	©Tatjana Meyer
p. 13 left	©Polizei Berlin	p. 41 left	©Polizei Berlin
	(ZSE V, Christian Haegele)	right	©Michael Ukas
right	Polizei officer at Alexanderplatz	p. 43	©Polizei Berlin
	©MOTOROLA	p. 45 left	©Polizei Berlin (LKA 713, Matthias Olt)
p. 15 left	©Tatjana Meyer	right	©Polizei Berlin (PHS)
right	©Polizei Berlin	p. 47 left	©Polizei Berlin (Dir 1 A 11, Gary Menzel)
p. 17	©Polizei Berlin	right 1	©Polizei Berlin (Thomas Heidtmann)
p. 19 left	©Polizei Berlin	right 2	©Polizei Berlin (Dir 1 A 11, Gary Menzel)
	(Dir ZA ZVKD 2, Carsten Drohm)	p. 49	©Michael Ukas
right	©Polizei Berlin	p. 53	©Michael Ukas
	(Dir ZA ZVKD 1, Mario Rudolf)		
p. 21	©Polizei Berlin		
p. 23	©Polizei Berlin (Dir ZA ZOS, Holger Saß)		
p. 25	©Polizei Berlin		
p. 27	©Tatjana Meyer		
p. 29 left+right	SEK Berlin ©F. Bensch/Reuters		
middle	Bomb disposal experts ©Polizei Berlin		
p. 31 left	©Polizei Berlin		
	(Dir ZA WSP PHuSt, Jens Lange)		
right 1	©Tatjana Meyer		
right 2	©Polizei Berlin (Dir ZA 2. BPA 2.TEE)		
p. 33 left	©Polizei Berlin		
right	©Polizei Berlin		
	(Dir ZA WSP PHuSt, Jens Lange)		



Imprint

Publisher

Der Polizeipräsident in Berlin
Platz der Luftbrücke 6
12101 Berlin

Editor

Andrea Keune, PPr St 42

Layout

Annette Graul
Jürgen Looß, ZSE IV C 423

Translation

James Boyd, LKA 74 EU

Proof reader

Peter Lützen, ZSE IV A 3

Printer

Fa. V.P.A. GmbH
Verlag für Polizei- und Behörden-Aufgaben
Staudach 24
84323 Massing

We wish to express our grateful thanks to all the members of the Berlin Police, who were involved in the publication of this brochure.

Date: October, 2013
All rights reserved

www.polizei.berlin.de

